



# MediConnect

Smart-Enablement for  
Legacy Clinical Devices



## Breathe new life into legacy gear

**MediConnect is a revolutionary, plug-and-play smart enablement device for legacy clinical equipment.**

Replacing an entire suite of clinical devices just to take advantage of remote connectivity can be expensive. With MediConnect, you can uplift your existing devices and start liberating your data - without the usual expense.

Bring your existing fleet of clinical devices into the new era with no downtime, no re-training staff, and without breaking the bank: just plug in and go.



## Connectivity for any device use case, including:



### Mobile Devices

4G, 3G and WiFi connectivity means you can centrally monitor patients in ambulances as if they were on a ward

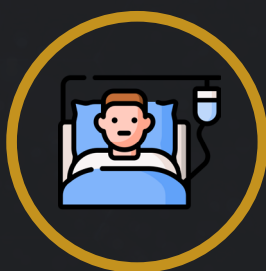
**Smart Wards**  
Rapidly smart enable ward equipment without having to call on property teams to run extensive network cabling



### Distant Care

Provide patients with clinical devices in their own homes or care facilities, knowing you can monitor and take action from afar

**... And much more**  
MediConnect sports dozens of connectivity options - to gather data from equipment and to get it back to base securely



# Universal connectivity to devices and beyond



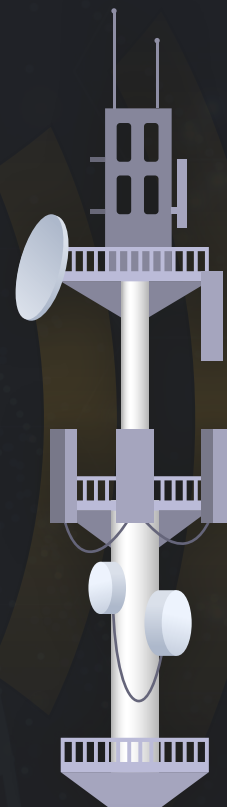
## Connect to your existing clinical devices

Whether you're smart enabling a legacy device, or building in more robust connectivity to a new suite of clinical instruments, MediConnect can gather data over USB, Ethernet (RJ-45), Serial, Local Wi-Fi (Ad-Hoc or 802.11 a/b/g/n), RS-232, and more. With built-in autosense drivers, just plug in MediConnect and data begins to get captured right away.



## Send data where it's most needed - near or far

MediConnect uses Ethernet (RJ-45), Wi-Fi, 3G, 4G, and 5G (where available) to reliably, quickly and securely send your data where it's most needed, through our industry-leading "SwiftCare Cloud". Whether you're on the move in an ambulance or smart-enabling a ward without wires, MediConnect gets your critical patient data to where it's needed.



## MediConnect Features and Capabilities

### Built-in storage and automatic decaching

When signal drops, MediConnect records every gathered metric to a secure on-device enclave, ready to be uploaded and caught up as soon as signal is available again

### Extreme encryption at rest and in transit

From the moment it is collected, data is encrypted both at rest and in transit, using industry-leading, rock-solid cryptographic suites

### Hyper-fast stream compression

All data is stream compressed before transmission back to base, ensuring transfer is fast and uses minimal data

### Long life built-in battery

Monitor patients on the move with a built in battery enabling hours of continual use between charges

### Plug and play operation

Autosense technology lets MediConnect work with zero intervention



**MediConnect is part of SwiftCare from Kinseed; get in touch today to find out how they can breathe new life to your healthcare devices, data and workflows**

